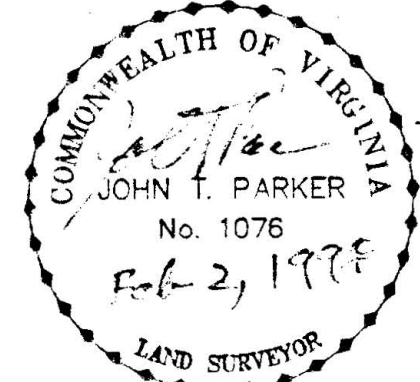
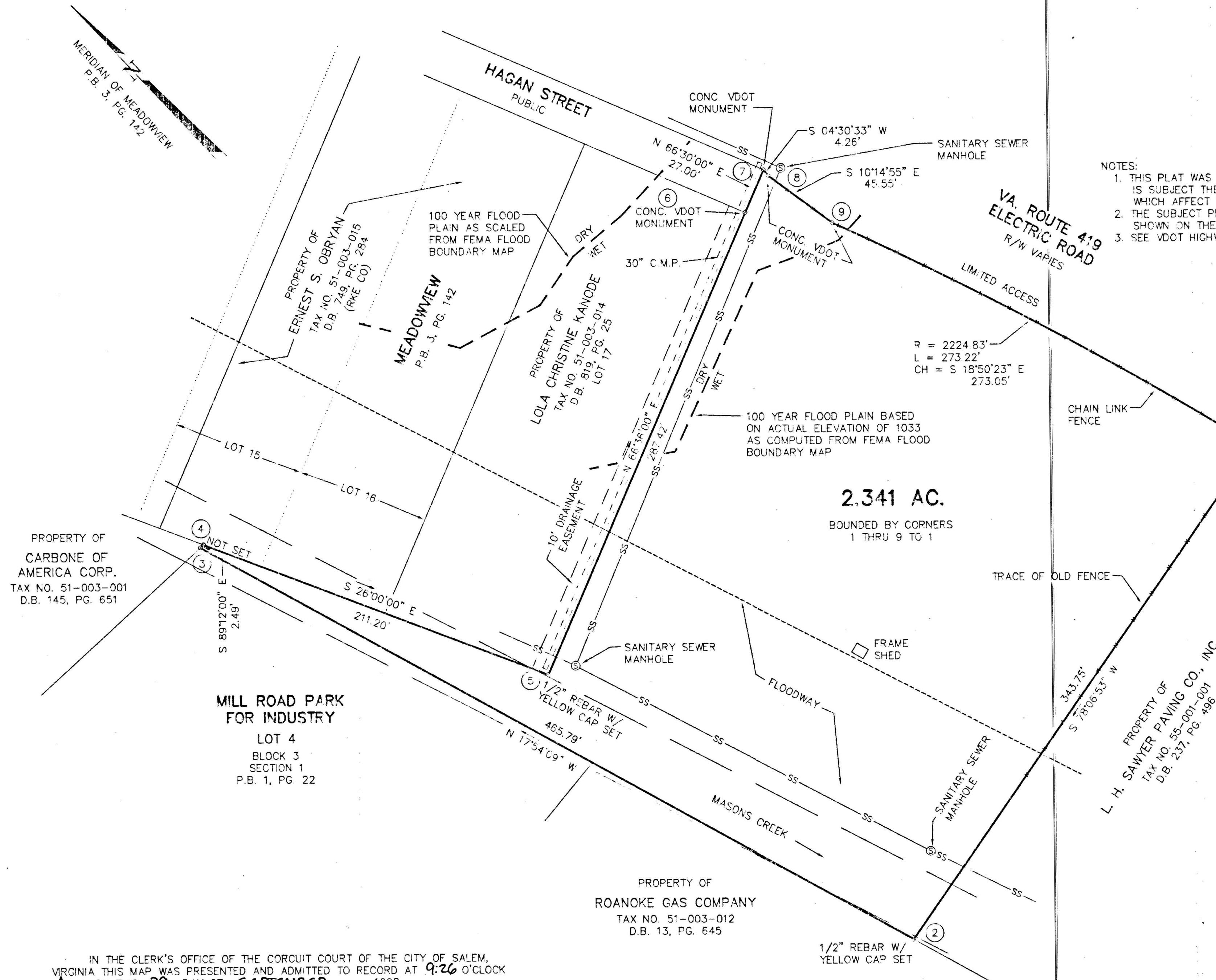


- NOTES:
1. THIS PLAT WAS PREPARED WITHOUT BENEFIT OF A TITLE REPORT AND IS SUBJECT THERETO. THEREFORE, THERE MAY EXIST ENCUMBRANCES WHICH AFFECT THE PROPERTY NOT SHOWN HEREON.
 2. THE SUBJECT PROPERTY IS WITHIN THE LIMITS OF ZONE AE AS SHOWN ON THE FEMA FLOOD INSURANCE RATE MAP.
 3. SEE VDOT HIGHWAY PLANS PROJECT NO. 0419-129-104, SHEET 8.



THIS PLAT IS BASED ON A CURRENT FIELD SURVEY AND LEGAL DESCRIPTION CONTAINED IN D.B. 4, PG. 318

BOUNDARY SURVEY FOR
CLYDE M. WIGGINTON

OF A 2.341 AC. TRACT SITUATE ON
VA. ROUTE 419 (ELECTRIC ROAD)

SALEM, VIRGINIA

T. P. PARKER & SON

ENGINEERS - SURVEYORS - PLANNERS

TAX NO.: 51-003-013
DRAWN: DAP
CALC.: DAP
N.B.: F-1

SCALE: 1" = 40'
JANUARY 28, 1998
W.O.: 97-1276

IN THE CLERK'S OFFICE OF THE CORCUIIT COURT OF THE CITY OF SALEM, VIRGINIA THIS MAP WAS PRESENTED AND ADMITTED TO RECORD AT 9:26 O'CLOCK A.M. ON THIS 29 DAY OF SEPTEMBER, 1998.

TESTE: CHANCE CRAWFORD
CLERK

BY: Melinda K. Martin
DEPUTY CLERK